

STORA HÄLSINGEGÅRDARS VÄG

Näsbyn and Långhed



high, with mansard and hipped roofs, up to nine windows on their gable ends and with six or seven pairs of windows along their sides. There are many of them.

The biggest farms

Olof Persson, who farmed on Schols in Näsbyn, was first to build big in the area, after admiring the grand homes of industrialists and mill owners. His new farmhouse was completed in 1821. It was a radical departure from the old-fashioned traditionally-build farm cottages of his neighbours. Schols inspired people throughout the parish. The biggest farms were Jon-Lars and Pallars in Långhed. These are now both listed buildings and are part of the World Heritage Area application.

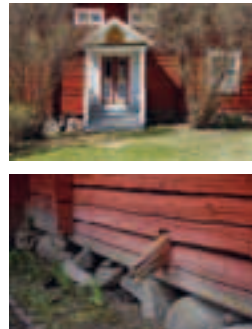
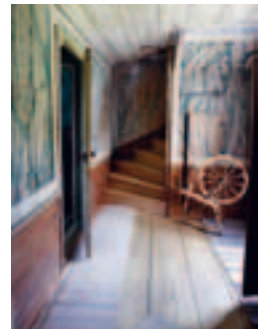
Falun red and pastels

This, the age of the sawmill boom, made its presence felt in buildings. Many of the houses were covered in wooden panelling; at the turn of the century, this was painted in pale pastel colours, further emphasising the manor house style. You can see these pastel farmhouses throughout the Voxna river valley,

Pallars, one of the farms included in the World Heritage Area application, is one of the biggest farms in the district.

THE VILLAGES OF NÄSBYNN AND LÅNGHED ARE ALMOST MERGED. This, the centre of the grand building style of the Hälsing-land farmers, is where we find farmhouses with up to 400 square metres of living space, with equally large empty spaces on upper floors and attics. The buildings are often two and a half stories

Vividly decorated porches ornament the Pallars farm in Långhed.



The huge Jon-Lars farmhouse with its magnificent porch.



Typical Dalarna paintings at Jon-Lars and the other farms in the village.

next to older timber houses painted red. The buildings were embellished with glazed verandas and ornamental woodwork. Architectural history professor Fredric Bedoire writes that there are few places where you find woodwork that is as richly decorative as that in Alfta. Some big farms – Jon-Lars and Ol-Svens in Långhed are two examples – were never covered in wooden panelling and kept their plain red-painted timber.

The forest – a parish boundary

The road between the villages of Långhed and Vängsbo leads through the forest that forms the boundary between the parishes of Alfta and Ovanåker. It is marked by a boundary stone from 1927. This is an ancient road, even if some sections have been

improved and changed over the years. In the upland parts, you have views of Hälsingland's vast forest landscape and blue-toned hills. There is a viewpoint at Vinberg, from which you can see the Voxnan river and its system of lakes. The forest meets the valley on the other side. The viewpoint offers a magnificent view of the river and the agricultural landscape.

The Ol-Svens farm kept its bare wood.



WWW.STORAHALSINGEGARDARSVAG.SE

Alfta and Edsbyn Tourist Office tfn 0271-556 61

SIGNPOSTED HÄLSINGLAND FARMS IN OVANÅKER

OL-ANDERS
0271-556 61

LÖKA
0271-556 49

MÄRTE
0271-205 81